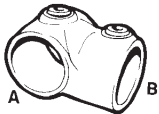
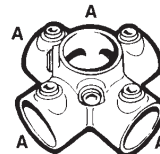
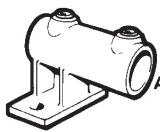
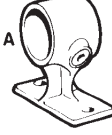

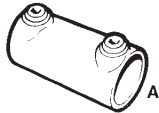
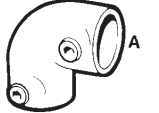


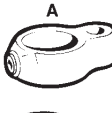


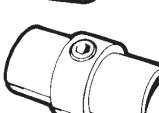

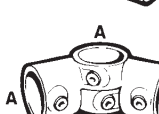

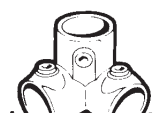










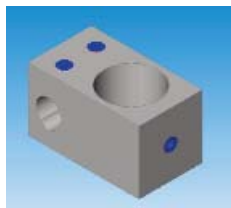


Universal KeeClamp frame connection parts for pipes 3/4" up to 1 1/4"

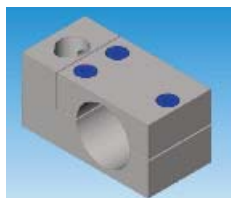
These parts are made of zinc-coated cast. However, optionally they can also be delivered with plastic coatings. Besides, all 1" parts are also compatible with the rack components of the Diehm-system.

3/4" 9020010-5		3/4" 9020040-5		3/4" 9020065-5	
1" 9020010-6		1" 9020040-6		3/4" 9020070-5	
1 1/4" 9020010-7		1 1/4" 9020040-7		1" 9020070-6	
A 1" -		B 3/4" 9020010-65	1 1/4" 9020070-7		
B 3/4" 9020010-65		A 1 1/4" -	3/4" 9020075-5		
A 1 1/4" -	B 1" 9020010-76	1" 9020045-5	1" 9020045-6	1" 9020075-6	
B 1" 9020010-76		1 1/4" 9020045-7	A 1" -	1 1/4" 9020075-7	
3/4" 9020014-5		3/4" 9020045-5	3/4" 90200F50-5	3/4" 9020075-5	
1" 9020014-6		1" 9020045-6	1" 90200F50-6	1" 9020075-6	
1 1/4" 9020014-7		1 1/4" 9020045-7	A 1" -	1 1/4" 9020075-7	
3/4" 9020015-5		B 3/4" 9020045-6	3/4" 90200M50-5	3/4" 9020077-5	
1" 9020015-6		A 1" -	1" 90200M50-6	1" 9020077-6	
1 1/4" 9020015-7		B 1 1/4" 9020045-7	1 1/4" 90200M50-7	1 1/4" 9020077-7	
3/4" 9020016-5		3/4" 90200F50-5	3/4" 90200C50-5	3/4" 9020078-5	
1" 9020016-6		1" 90200F50-6	1" 90200C50-6	1" 9020078-6	
1 1/4" 9020016-7		1 1/4" 90200F50-7	1 1/4" 90200C50-7	1 1/4" 9020078-7	
3/4" 9020017-5		3/4" 90200M50-5	3/4" 90200M51-5	3/4" 9020097-5	
1" 9020017-6		1" 90200M50-6	1" 90200M51-6	1" 9020097-6	
1 1/4" 9020017-7		1 1/4" 90200M50-7	1 1/4" 90200M51-7	1 1/4" 9020097-7	
3/4" 9020018-5		3/4" 90200M51-5	3/4" 90200M52-5	3/4" 9020098-5	
1" 9020018-6		1" 90200M51-6	1" 90200M52-6	1" 9020098-6	
1 1/4" 9020018-7		1 1/4" 90200M51-7	1 1/4" 90200M52-7	1 1/4" 9020098-7	
3/4" 9020019-5		3/4" 90200C50-5	3/4" 90200M52-5	3/4" 9020099-5	
1" 9020019-6		1" 90200C50-6	1" 90200M52-6	1" 9020099-6	
1 1/4" 9020019-7		1 1/4" 90200C50-7	1 1/4" 90200M52-7	1 1/4" 9020099-7	
3/4" 9020020-5		3/4" 90200C50-5	3/4" 90200C52-5	3/4" 9020099-5	
1" 9020020-6		1" 90200C52-5	1" 90200C52-6	1" 9020099-6	
1 1/4" 9020020-7		1 1/4" 90200C52-7	1 1/4" 90200C52-7	1 1/4" 9020099-7	
3/4" 9020021-5		3/4" 90200C52-5	3/4" 90200C58-5	1" 90200105-6	
1" 9020021-6		1" 90200C58-5	1" 90200C58-6	1 1/4" 90200105-7	
1 1/4" 9020021-7		1 1/4" 90200C58-7	1 1/4" 90200C58-7		
3/4" 9020025-5		3/4" 90200C58-5	3/4" 9020060-5		
1" 9020025-6		1" 90200C58-6	1" 9020060-6		
1 1/4" 9020025-7		1 1/4" 90200C58-7	1 1/4" 9020060-7		
3/4" 9020026-5		3/4" 9020060-5	3/4" 9020060-5		
1" 9020026-6		1" 9020060-6	1" 9020060-6		
1 1/4" 9020026-7		1 1/4" 9020060-7	1 1/4" 9020060-7		
3/4" 9020035-5					
1" 9020035-6					
1 1/4" 9020035-7					

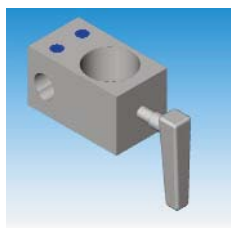
Rack parts made of anodized aluminium



Cross connector			
Ø1	Ø2	purchase no.	
1" / 34 mm	10 - 16 mm	901 4534	161
1 1/4" / 42 mm	10 - 16 mm	901 4543	161



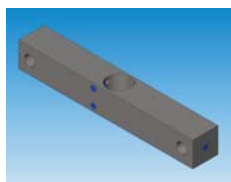
Cross connector (separable, for afterwards installation)			
Ø1	Ø2	purchase no.	
1" / 34 mm	10 - 16 mm	901 4534	162
1 1/4" / 42 mm	10 - 16 mm	901 4543	162



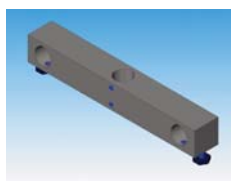
Cross connector with clamping bracket			
Ø1	Ø2	purchase no.	
1" / 34 mm	10 - 16 mm	901 4534	163
1 1/4" / 42 mm	10 - 16 mm	901 4543	163



Flange support bar (for flange holder DN 120 / DN 150)			
Ø1	Ø2	holder	purchase no.
1" / 34 mm	13 mm	fiberglass	901 0134 134
1" / 34 mm	16 mm	stainless steel	901 0134 164



Flange support bar (for flange holder DN 200)			
Ø1	Ø2	holder	purchase no.
1" / 34 mm	16 mm	stainless steel	901 0134 165



Foot for small 1" racks		
350 x 50 x 50 mm	3 x 1" / 34 mm	purchase no.
		901 0134 340



Flange support bar (for stainless steel holder DN 120 - DN 200)		
690 x 50 x 50 mm		purchase no.
1" / 34 mm	DN 150 fiberglass	901 0334 134
1" / 34 mm	DN 120 / DN 150	901 0334 164
1" / 34 mm	DN 200	901 0334 165



Foot for standard 1" racks		
690 x 50 x 50 mm	5 x 1" / 34 mm	purchase no.
		901 0334 340



Table rack for small reaction systems up to 5 litre / DN 60 up to DN 120
prepared for flange holder DN 60 - DN 120 made of fiberglass.

length x wide x height
350 x 500 x 1300 mm

purchase no.
91 415 11 1A6



Table rack for small reaction systems up to 5 litre / DN 120 up to DN 150
prepared for flange holder DN 150 made of fiberglass or flange holder DN 120 - DN 200 made of stainless steel.

length x wide x height
350 x 500 x 1300 mm

for flange holder made of fiberglass

DN	purchase no.
150	91 415 14 1A3

for flange holder made of stainless steel

DN	purchase no.
120-	
150	91 415 14 1A6
200	91 415 15 1A6



Bottom rack for reaction systems up to 20 litre / DN 120 up to DN 150

prepared for flange holder DN 150 made of fiberglass or flange holder DN 120 - DN 200 made of stainless steel.

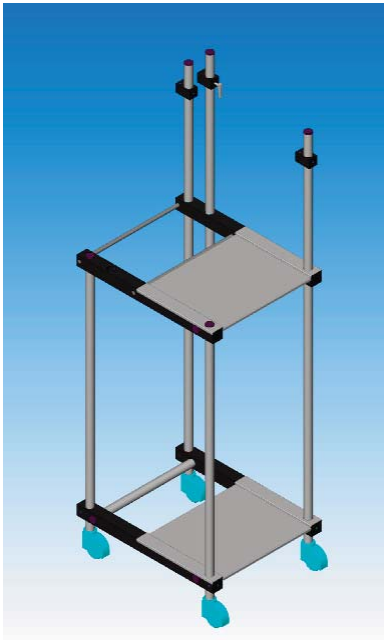
length x wide x height
350 x 500 x 1800 mm

for flange holder made of fiberglass

DN	purchase no.
150	91 415 14 2A3

for flange holder made of stainless steel

DN	purchase no.
120-	
150	91 415 14 2A6
200	91 415 15 2A6



Laboratory rack for reactors DN 120 - DN 200 (vessels up to 20 litre)

measurements:

length x wide x height: 550 x 690 x 1800 mm

material:

connection parts made of anodized aluminium
 tubes and staffs made of stainless steel AISI 304
 table made of stainless steel AISI 304
 4 wheels made of tough plastic

purchase no.
with wheels and without wheels

for holders made of fiberglass

DN 60 - 120	91 450 12 6A2	91 450 11 6A2
DN 150	91 450 15 3A2	91 450 14 3A2

for holders made of stainless steel

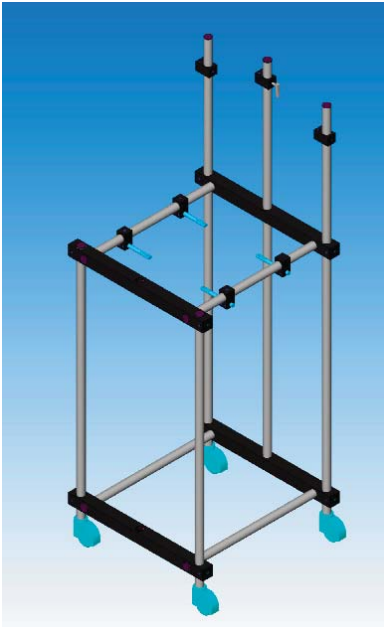
DN 120 - 150	91 450 18 6A2	91 450 17 6A2
DN 200	91 450 21 6A2	91 450 20 6A2

additional parts:

vessel bearing ring 16 mm with cross clamp	91 450 34AT6
lift system with counter weight for stainless steel holder	91 450 34L01

lift system with counter weight for vessels with holder made of fiberglass

DN 120	91 450 L120
DN 150	91 450 L150



Laboratory rack for reactors DN 300, up to 20 litre with technical flanges

measurements:

length x wide x height: 700 x 690 x 1800 mm

material:

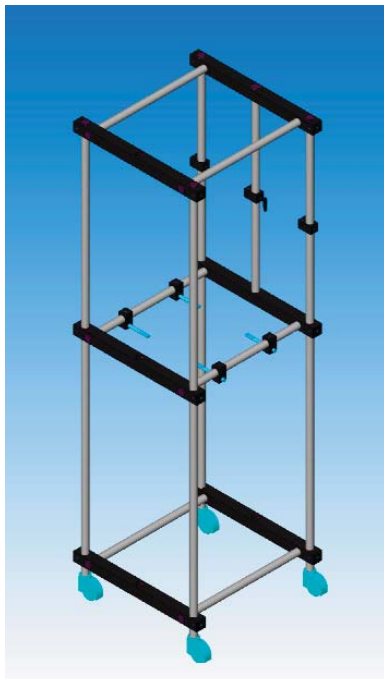
connection parts made of anodized aluminium
 tubes and staffs made of stainless steel AISI 304
 4 wheels made of tough plastic

purchase no.
with wheels and without wheels

200	91 450 24 6A2	91 450 23 6A2
300	91 450 26 6A2	91 450 25 6A2

additional parts:

vessel bearing ring 16 mm with cross clamp	91 450 34AT6
lift system with counter weight for stainless steel holder	91 450 34L01



Laboratory rack for reactors DN 300, up to 50 litre with technical flanges

measurements:

length x wide x height: 700 x 690 x 2300 mm

material:

connection parts made of anodized aluminium
 tubes and staffs made of stainless steel AISI 304
 4 wheels made of tough plastic

purchase no.
with wheels and without wheels

300	91 450 35 6A3	91 450 30 6A3
-----	---------------	---------------

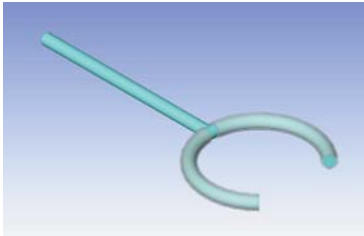
additional parts:

vessel bearing ring 16 mm with cross clamp	91 450 34AT6
lift system with counter weight for stainless steel holder	91 450 34L01
additional counter weight 5 kg	91 450 34L02



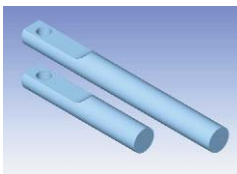
**Grounded staffs
for holding of reaction vessels. Staffs
made of stainless steel AISI 304**

Ø mm	length mm	purchase no.
13	300	91 410 13030
13	490	91 410 13049
16	300	91 410 16030
16	490	91 410 16049
16	500	91 410 16050
16	550	91 410 16055



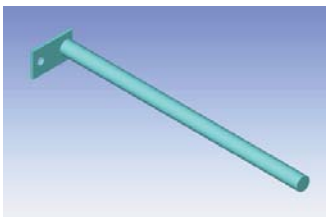
**Bearing ring simple construction
with silicone jacket**

Ø mm	purchase no.
13	91 407 13300
16	91 407 16300



**Bearing staff
for fixing of flange holders**

Ø mm	length mm	purchase no.
16	90	91 408 16090
16	110	91 408 16110
16	130	91 408 16130
16	150	91 408 16150
16	170	91 408 16170



**Fixation staff
for stabilise a rack at the wall**

Ø mm	purchase no.
13 x 250	91 409 13250



**Tension holder for supporting
tubes, reactors and so on.
rod**

Ø mm	length	purchase no.
70	300	91 411 07000
90	300	91 411 09000
100	300	91 411 10000
105	300	91 411 10500
110	300	91 411 11000
120	300	91 411 12000
130	300	91 411 13000
150	300	91 411 15000
160	300	91 411 16000
180	300	91 411 18000
190	300	91 411 19000
200	300	91 411 20000
210	300	91 411 21000
215	300	91 411 21500
250	300	91 411 25000
270	300	91 411 27000
300	300	91 411 30000
310	300	91 411 31000
315	300	91 411 31500
350	300	91 411 35000
365	300	91 411 36500
415	300	91 411 41500



distance bush Ø 13 / 16 mm

Ø1	Ø2	Purchase no.
13	16	90 103 01613



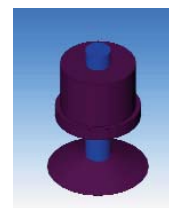
**Räder für Gestille
für Rohre**

	Artikel Nr.:
1"	9016334075
1" elektrisch leitfähig	9016334075E
1 1/4"	9016343075
1 1/4" elektrisch leitfähig	9016343075E

Grounded tubes made of stainless steel AISI 304

Ø mm	length mm	purchase no.
33,7	450	91 410 34045
33,7	500	91 410 34050
33,7	550	91 410 34055
33,7	590	91 410 34059
33,7	600	91 410 34060
33,7	700	91 410 34070
33,7	900	91 410 34090
33,7	950	91 410 34095
33,7	1000	91 410 34100
33,7	1100	91 410 34110
33,7	1380	91 410 34138
33,7	1680	91 410 34168
33,7	1700	91 410 34170
33,7	1750	91 410 34175
33,7	1980	91 410 34198
33,7	2100	91 410 34210
33,7	2180	91 410 34212
33,7	2200	91 410 34280
33,7	2300	91 410 34230
33,7	2500	91 410 34250
33,7	2700	91 410 34270
33,7	2950	91 410 34295

42,4	500	91 410 43050
42,4	550	91 410 43055
42,4	600	91 410 43060
42,4	700	91 410 43070
42,4	900	91 410 43090
42,4	950	91 410 43095
42,4	1000	91 410 43100
42,4	1100	91 410 43110
42,4	1680	91 410 43168
42,4	1700	91 410 43170
42,4	1800	91 410 43180
42,4	2180	91 410 43218
42,4	2200	91 410 43220
42,4	2300	91 410 43230
42,4	2500	91 410 43250
42,4	2700	91 410 43270
42,4	3000	91 410 43300



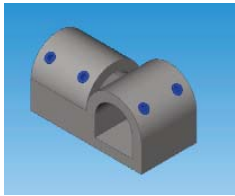
Base for SS tubes

Tube	length	Purchase no.
M8	30	90 162 08040
1"	50	90 162 34050
x2	80	90 162 34080
1 1/4"	50	90 162 43050
x2,5	80	90 162 43080



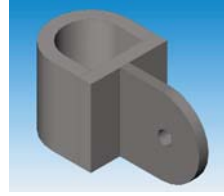
**Gabelhalter für
Flanschverbindungen**

DN	Länge	Artikelnummer
15	300	91 412 01500
25	300	91 412 02500
40	300	91 412 04000
50	300	91 412 05000
80	300	91 412 08000
100	300	91 412 10000
150	300	91 412 15000



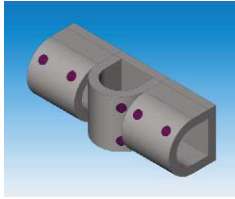
T - connector
made of stainless steel AISI 304

	purchase no.
1" x 1"	904 1034 340
1 1/4" x 1 1/4"	904 1043 430



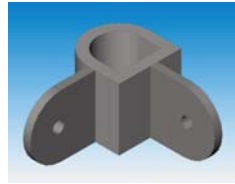
Diagonal connector
made of stainless steel AISI 304

	purchase no.
1" x 1"	904 M5034 08
1 1/4" x 1 1/4"	904 M5043 08



Double T - connector
made of stainless steel AISI 304

	purchase no.
1" x 1"	904 2634 340
1 1/4" x 1 1/4"	904 2643 430



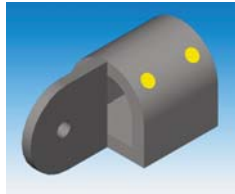
Double diagonal connector
made of stainless steel AISI 304

	purchase no.
1"	904 M5234 08
1 1/4"	904 M5243 08



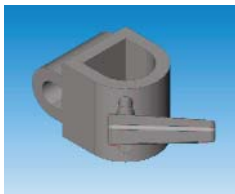
X - connector
made of stainless steel AISI 304

	purchase no.
1" x 10 - 16 mm	904 4534 161
1 1/4" x 10 - 16 mm	904 4543 161



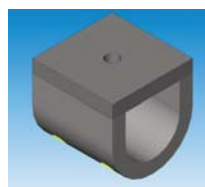
Tube adapter for diagonal connector
made of stainless steel AISI 304

	purchase no.
1"	904 F5034 08
1 1/4"	904 F5043 08



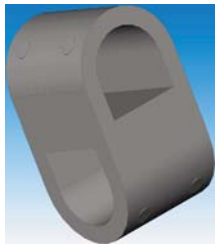
X - connector
with quick regulation lever
made of stainless steel AISI 304

	purchase no.
1" x 10 - 16 mm	904 4534 163
1 1/4" x 10 - 16 mm	904 4543 163



Tube connector with thread M8
made of stainless steel AISI 304

	purchase no.
1"	904 0034 M08
1 1/4"	904 0043 M08



X - connector
made of stainless steel AISI 304

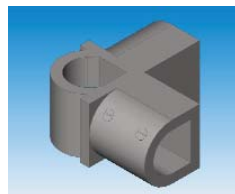
	purchase no.
1" x 1"	904 4534 340
1 1/4" x 1"	904 4543 340
1 1/4" x 1 1/4"	904 4543 430



Table rack for small reaction systems up to 5 litre / DN 60 up to DN 120 complete made of stainless steel
prepared for flange holder DN 60 - DN 120 made of glass polyester.

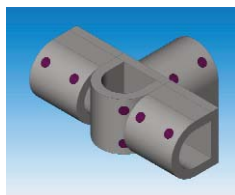
wide x length x height
350 x 500 x 1300 mm

purchase no.
91 415 11 1S6



Corner connector
made of stainless steel AISI 304

	purchase no.
1" x 1"	904 2134 34
1 1/4" x 1 1/4"	904 2143 43



Double corner connector
made of stainless steel AISI 304

	purchase no.
1" x 1"	904 3534 34
1 1/4" x 1 1/4"	904 3543 43



Table rack for reaction systems up to 5 litre / DN 120 up to DN 200 complete made of stainless steel
prepared for flange holder DN 150 made of fiberglass or flange holder DN 120 - DN 200 made of stainless steel.

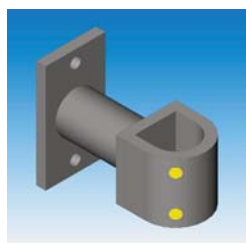
length x wide x height
350 x 500 x 1300 mm

for flange holder made of fiberglass

DN	purchase no.
150	91 415 14 1S3

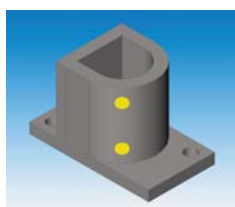
for flange holder made of stainless steel

DN	purchase no.
120-	
150	91 415 14 1S6
200	91 415 15 1S6



Wall support
made of stainless steel AISI 304

	purchase no.
1"	904 6434 34
1 1/4"	904 6443 43



Floor plate
made of stainless steel AISI 304

	purchase no.
1"	904 6234 34
1 1/4"	904 6243 43



Bottom rack for reaction systems up to 20 litre / DN 120 - DN 150 complete made of stainless steel AISI 304

prepared for flange holder DN 150 made of fiberglass or flange holder DN 120 - DN 200 made of stainless steel.

length x wide x height
350 x 500 x 1800 mm

for flange holder made of fiberglass

DN	purchase no.
150	91 415 14 2S3

for flange holder made of stainless steel

DN	purchase no.
120-	
150	91 415 14 2S6
200	91 415 15 2S6

Laboratory rack for reactors DN 120 - DN 200, up to 20 litre

material: complete rack made of stainless steel AISI 304
table made of stainless steel AISI 304
4 wheels made of tough plastic

measurements: length x wide x height: 550 x 690 x 1800 mm

DN	purchase no.	
	with wheels	and without wheels
for flange holder made of fiberglass		
DN 120	91 450 12 3S2	91 450 11 3S2
DN 150	91 450 15 3S2	91 450 14 3S2
for flange holder made of stainless steel		
DN 120 - 150	91 450 18 6S2	91 450 17 6S2
DN 200	91 450 21 6S2	91 450 20 6S2

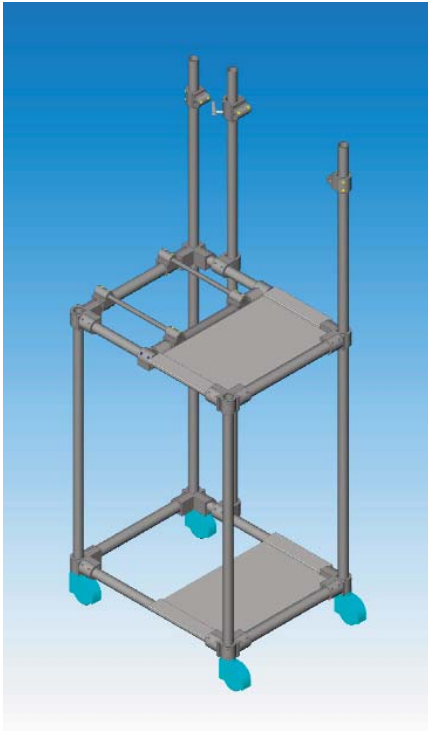
measurements: length x wide x height: 550 x 690 x 2100 mm

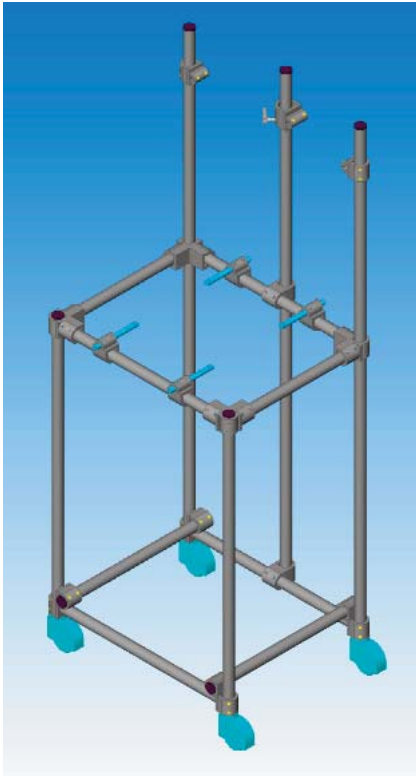
DN	purchase no.	
	with wheels	and without wheels
for flange holder made of fiberglass		
DN 120	91 450 12 3S2	91 450 11 3S4
DN 150	91 450 15 3S2	91 450 14 3S4
for flange holder made of stainless steel		
DN 120 - 150	91 450 18 6S2	91 450 17 6S4
DN 200	91 450 21 6S2	91 450 20 6S4

additional parts:
vessel bearing ring 16 mm with cross clamp 91 450 34 T01
lift system with counter weight for stainless steel holder 91 450 34 L01

lift system with counter weight for vessels with holder made of fiberglass
DN 120 91 450 L120
DN 150 91 450 L150

vessel bearing ring 16 mm with cross clamp 91 450 34ST6
ft system with counter weight for stainless steel holder 91 450 34L01





Laboratory rack for reactors DN 300, up to 20 litre mit Bundflanschsystem

material: complete rack made of stainless steel AISI 304
4 wheels made of tough plastic

measurements: length x wide x height: 700 x 690 x 1800 mm
purchase no.

DN	with wheels	and	without wheels
200	91 450 24 6S2		91 450 23 6S2
300	91 450 26 6S2		91 450 25 6S2

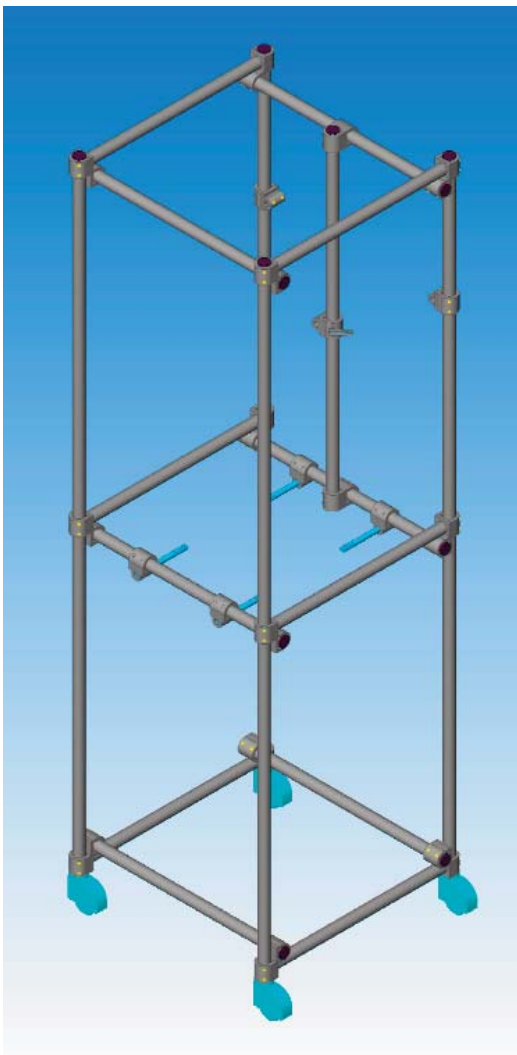
measurements: length x wide x height: 700 x 690 x 1800 mm
purchase no.

DN	with wheels	and	without wheels
200	91 450 24 6S4		91 450 23 6S4
300	91 450 26 6S4		91 450 25 6S4

additional parts:

vessel bearing ring 16 mm cross clamp 91 450 T01
lift system with counter weight for stainless steel holder 91 450 L01

vessel bearing ring 16 mm cross clamp 91 450 34ST6
lift system with counter weight for stainless steel holder 91 450 34L01
additional counter weight 5 kg 91 450 34L02



Laborgestelle für Reaktoren DN 300, up to 50 litre

material: complete rack made of stainless steel AISI 304
4 wheels made of tough plastic

measurements: length x wide x height: 690 x 700 x 2300 mm
purchase no.

DN	with wheels	and	without wheels
200	91 450 34 6S3		91 450 29 6S3
300	91 450 35 6S3		91 450 30 6S3

measurements: length x wide x height: 800 x 800 x 3000 mm
purchase no.

DN	with wheels	and	without wheels
400	91 450 65 6S3		91 450 60 6S3
450	91 450 75 6S3		91 450 70 6S3

additional parts:1"

vessel supporting ring 16 mm with cross clamp 91 450 34 T01
lift system with counter weight for stainless steel holder 91 450 34 L01
additional counter weight 5 kg 91 450 34 L02

vessel bearing ring 16 mm cross clamp 91 450 34ST6
lift system with counter weight for stainless steel holder 91 450 34L01
additional counter weight 5 kg 91 450 34L02

additional parts:1 1/4"

vessel supporting ring 16 mm with cross clamp 91 450 43 T01
lift system with counter weight for stainless steel holder 91 450 43 L01
additional counter weight 5 kg 91 450 43 L02

vessel bearing ring 16 mm cross clamp 91 450 43ST6
lift system with counter weight for stainless steel holder 91 450 43L01
additional counter weight 5 kg 91 450 34L02